

A scenic view of a beachfront resort. In the foreground, there is a lush green lawn. A row of lounge chairs with white umbrellas is set up on a wooden deck overlooking the ocean. Several tall palm trees are scattered throughout the scene, some framing the view. In the background, a calm blue sea stretches to a range of misty, green mountains under a bright blue sky with soft white clouds.

# dialog

BANYUWANGI

## A Great Place to Meet

Dialoog Banyuwangi offers a refreshing venue for corporate events and gatherings, where our beautiful beachfront setting meets with simple sophistication and heartfelt service. Explore the many ways we can help you impress your guests and inspire your team.



## Meeting, Event & Conference Planning

From formal meetings to business conferences, our event planning team will work with you to ensure every detail runs smoothly, allowing you to meet and network with success.

## Exhibitions & Launches

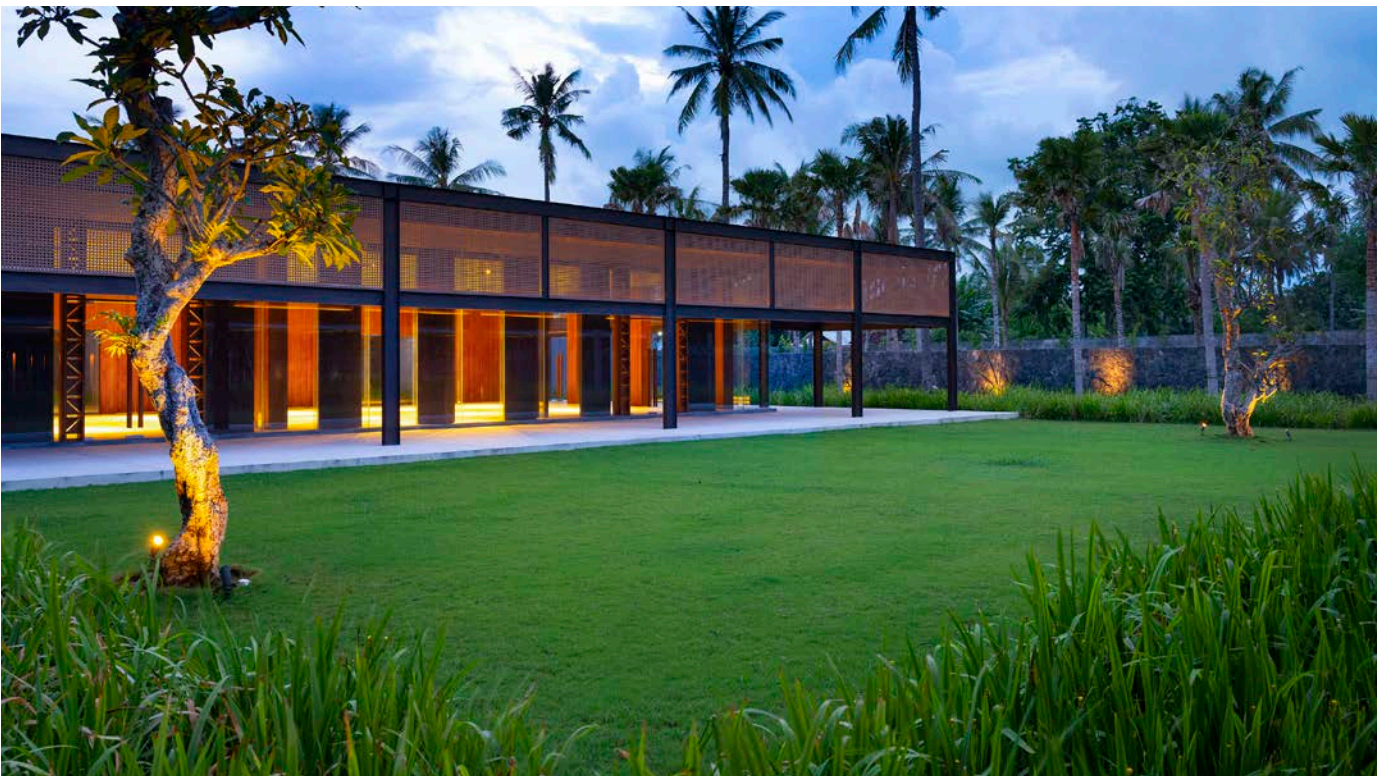
Make a positive first impression with a well-executed press conference, product launch, intimate exhibition or fashion show.

## Themed Parties

Celebrate a special occasion or a corporate milestone with a party styled according to a unique theme, limited only by your Imagination.

## Corporate Retreats

Experience productive and creative corporate retreats with group itineraries tailored to your needs, including accommodation, dining options and unforgettable team-bonding experiences.



The event space features a stunning glass-walled ballroom that can be fully air-conditioned, an outdoor pre-function area and an adjacent lawn. In total, 500 guests can be accommodated for corporate and social events and celebrations, including cocktail receptions, dinners, corporate meetings and training, and weddings.

Seating Style	Ballroom	Meeting Room	Pre-Function	Lawn
Cocktail	200	50	75	200
Sit-down Dinner	150	30	50	150
Theatre	130	30	-	-
Classroom	72	-	-	-





## Space to Suit Your Needs

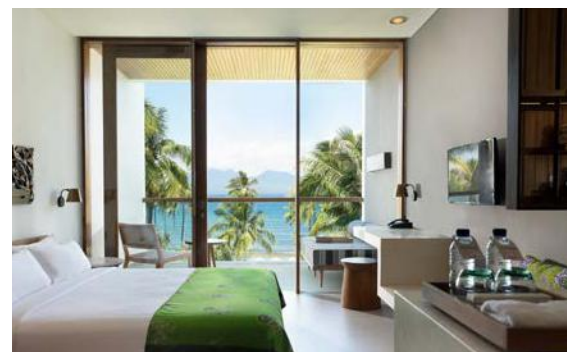
Ideas and creativity will flow freely in our versatile event spaces, which include a stunning glass-walled ballroom that can be fully air-conditioned, an outdoor pre-function area and an adjacent lawn. In total, up to 500 guests can be accommodated for corporate and social events and celebrations, including cocktail receptions, dinners, corporate meetings and training.

## A Stylish Stay

Dialog Banyuwangi houses 116 rooms that are modern in design, combining stylish simplicity with exceptional comfort and convenience. They include 60 Deluxe Rooms (36 sqm) and 32 Ocean Deluxe Rooms (36 sqm with ocean views). All rooms have an open-concept layout with a bedroom, bathroom and private balcony, filled with natural light through floor-to-ceiling windows.

In addition, 24 Suites (56 sqm) with ocean views provide a great sense of space and luxury. The Suites feature a bright lounge area with a sofa and armchair, and a separate bathroom with a bathtub, rain shower and two wash basins.

All rooms are non-smoking. However, smoking is permitted on the balcony and outdoors.







## Dining & Leisure Facilities

### Casabanyu Restaurant & Bar

With a breathtaking view of the sea, the beachfront restaurant and bar serves authentic Indonesian fare and contemporary International cuisine. Mocktails, fine wines and cocktails complement the menu, while a specialty coffee corner serves gourmet brews for the refined appreciation of coffee lovers. Whether breakfast after sunrise, lunch in the shade or cocktails at sunset, it is the perfect place to unwind. Open daily from 6:00 am to 11:00 pm

### Beach Bar

Exclusively for in-house guests, the poolside bar and alfresco lounge are relaxing spots to chill out in the ocean breeze, enjoying a creative menu of drinks and finger food. Open daily from 11.00 am to 11.00 pm

### Swimming Pool

Located adjacent to the restaurant, the infinity swimming pool is an oasis of relaxation with splendid views of the beach and the ocean. The 25 m x 50 m pool includes a kid's wading pool. Open daily from 6:00 am to 6:00 pm

### Gym

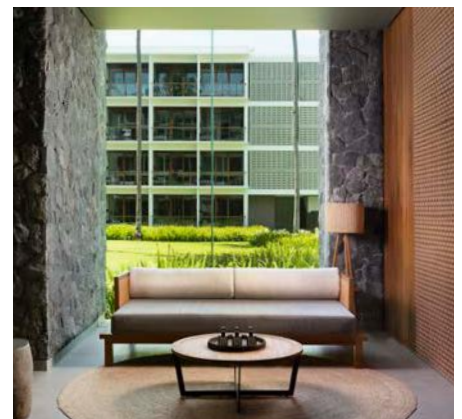
Bright and spacious with large floor-to-ceiling windows overlooking the courtyard, the gym features the latest equipment and is accessible from 9:00 am to 9:00 pm for hotel guests.

### Spa

With two spacious single rooms and one double treatment room, the spa at Dlalooq Banyuwangi specializes in aromatherapy and traditional Indonesian spa healing techniques. A retail collection of massage oils and beauty products is also available. Open daily from 9.00 am to 9.00 pm

### Others

In-Room Dining - 10.00 am to 10.00 pm | Airline Ticket Booking and Confirmation | Airport Transportation, Tour and Concierge Services | Laundry Services | Complimentary Welcome Drink | High-speed wireless internet access in all rooms and public areas



## Meeting Packages

Package	Inclusion	Special Rate
Half-day	<ul style="list-style-type: none"><li>- Meeting set up (note pad, pen, bottle mineral water and flip chart)</li><li>- 1x Coffee break</li><li>- 1x Lunch or dinner (1 meal)</li><li>- Use of 5 hours meeting room</li><li>- Menu to be confirm</li></ul>	IDR 453.750 nett/person
Full-day	<ul style="list-style-type: none"><li>- Meeting set up (note pad, pen, bottle mineral water and flip chart)</li><li>- 2x Coffee break</li><li>- 1x Lunch or dinner (1 meal)</li><li>- Use of 8 hours meeting room</li><li>- Menu to be confirm</li></ul>	IDR 550.500 nett/person
Full-board	<ul style="list-style-type: none"><li>- Meeting set up (note pad, pen, bottle mineral water and flip chart)</li><li>- 2x Coffee break</li><li>- 1x Lunch and 1x dinner (2 meals)</li><li>- Use of 8 hours meeting room</li><li>- Menu to be confirm</li></ul>	IDR 877.250 nett/person

## Buffet Packages

Package	Inclusion	Special Rate
Menu 1	<ul style="list-style-type: none"><li>- 1 Appetizer</li><li>- 1 Soup</li><li>- 3 Main Courses</li><li>- 1 Dessert</li><li>- 2 Drinks</li></ul>	IDR 302.500 nett/person
Menu 2	<ul style="list-style-type: none"><li>- 2 Appetizers</li><li>- 1 Soup</li><li>- 4 Main courses</li><li>- 2 Desserts</li><li>- 2 Drinks</li></ul>	IDR 423.500 nett/person
Menu 3	<ul style="list-style-type: none"><li>- 2 Appetizers</li><li>- 1 Soup</li><li>- 5 Main courses</li><li>- 2 Desserts</li><li>- 3 Drinks</li></ul>	IDR 544.500 nett/person





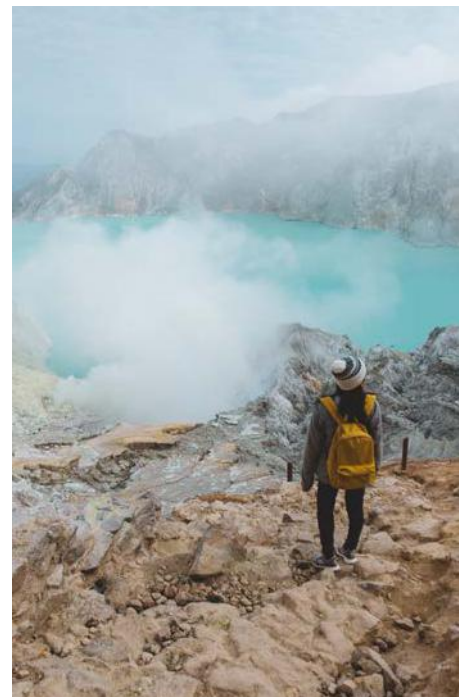
## Space to Suit Your Needs

Banyuwangi's beautiful natural landscape is made for adventure. Build team spirit with a host of fun and challenging activities such as a hike to Ijen Crater to see its famous blue flames, a trip to Baluran National Park, or snorkeling at Bangsring, East Java's underwater paradise.

Teambuilding activities can also be organised within the resort. Think cool, fun-filled treasure hunts, fishing competitions and campfire storytelling that will have your team bonding like never before. Then wind things down with an evening of Moonlight Cinema, lounging on plush beanbags scattered under a moonlit sky on the lawn, sharing popcorn and camaraderie.









## Dialoog Banyuwangi

Jl. Yos Sudarso, Klatak Banyuwangi 68421, Indonesia  
T: +62 333 2800 999 | E: [info@dialoogbanyuwangi.com](mailto:info@dialoogbanyuwangi.com)  
[www.dialooghotels.com](http://www.dialooghotels.com)

 @dialoogbanyuwangi  
 /dialooghotels.banyuwangi